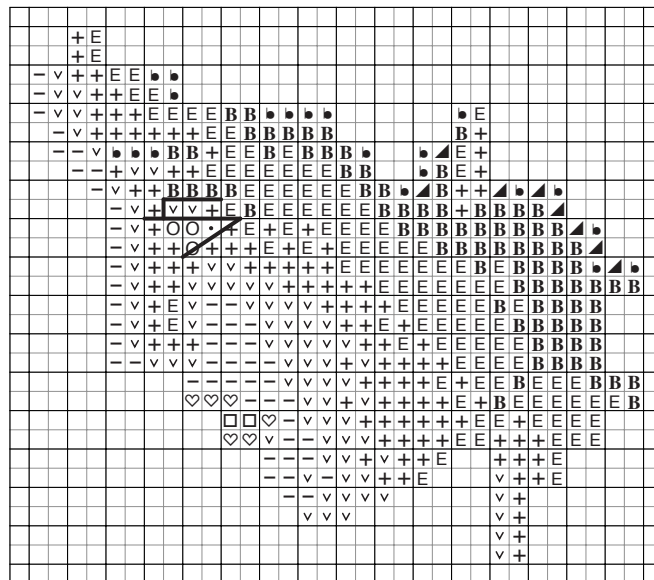
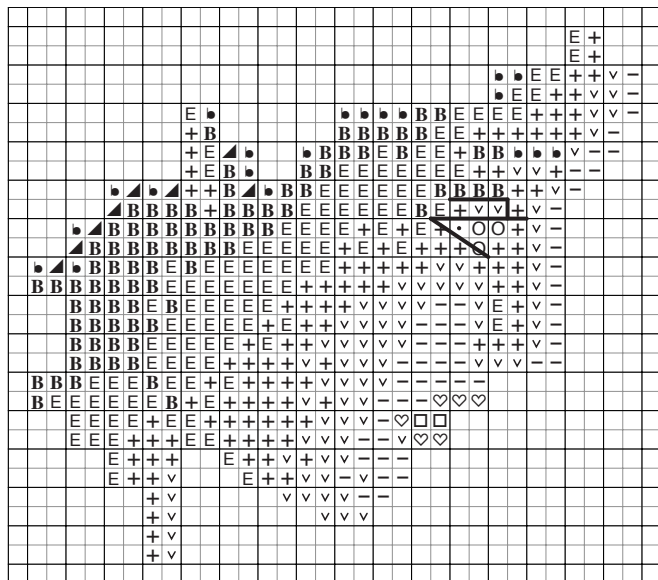


"Spring Bride" over 1 face

designed by Marilyn Leavitt-Imblum

This over-one face may be used as an alternative on many of Marilyn's designs that have only an over-two face.



DMC

v	950	-	3770	+	3773	♡	3779
○	3750	E	3772	□	3778	•	B5200

This face may not be used for designs created by others.
This chart may not be posted online in any form other than at www.tiag.com.

"Spring Bride" by Marilyn Leavitt-Imblum. Copyright © 2002 Told in a Garden. All Rights Reserved.

Hair and Backstitch Instructions

Adapt the hair colors (B, ♣, and ▲ light to dark) to the design.
Adapt the edges to fit the design.

- Use two strands of ▲ for eyelashes
- Use one strand of B for eyelid

Lavender & Lace

Told in a Garden
www.tiag.com